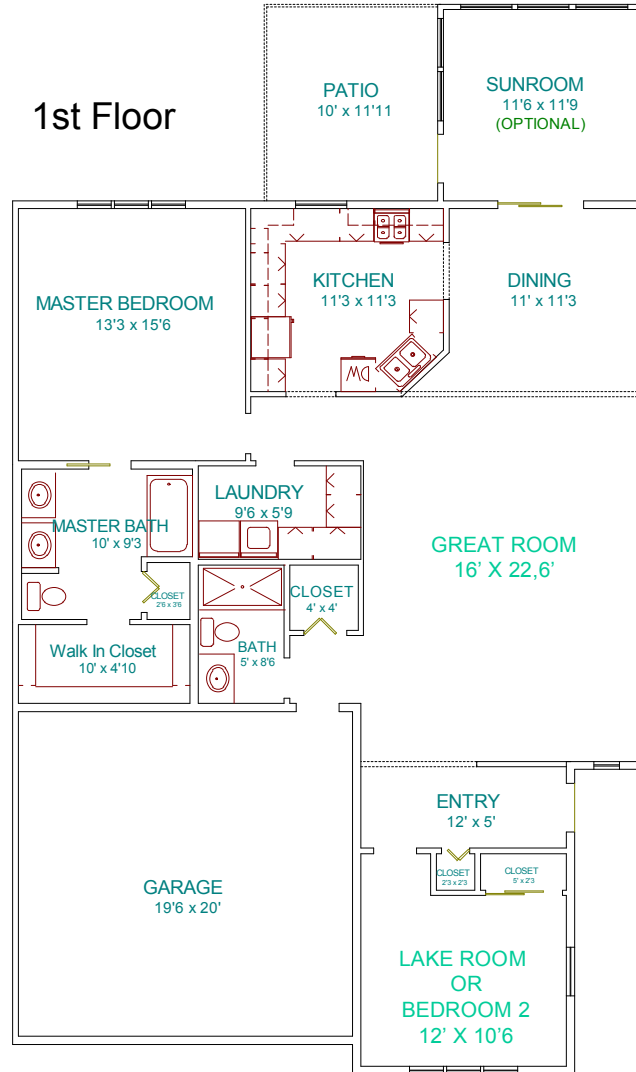
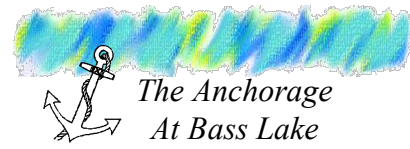


The Oakview I

(1-Story End Unit)

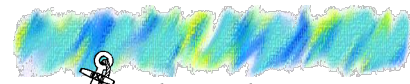


1,457 sq. ft.

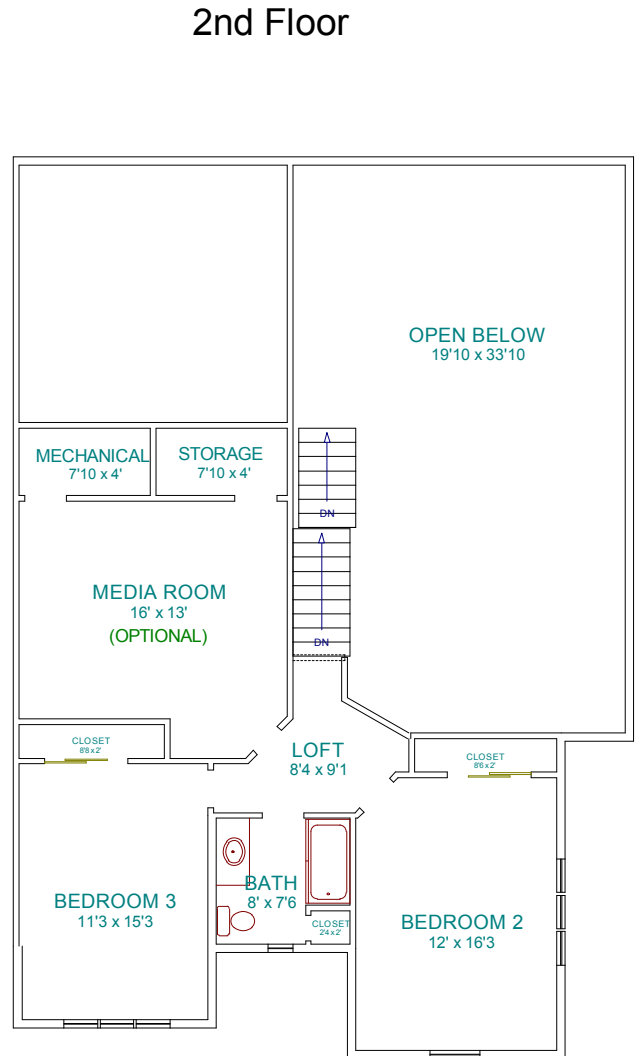
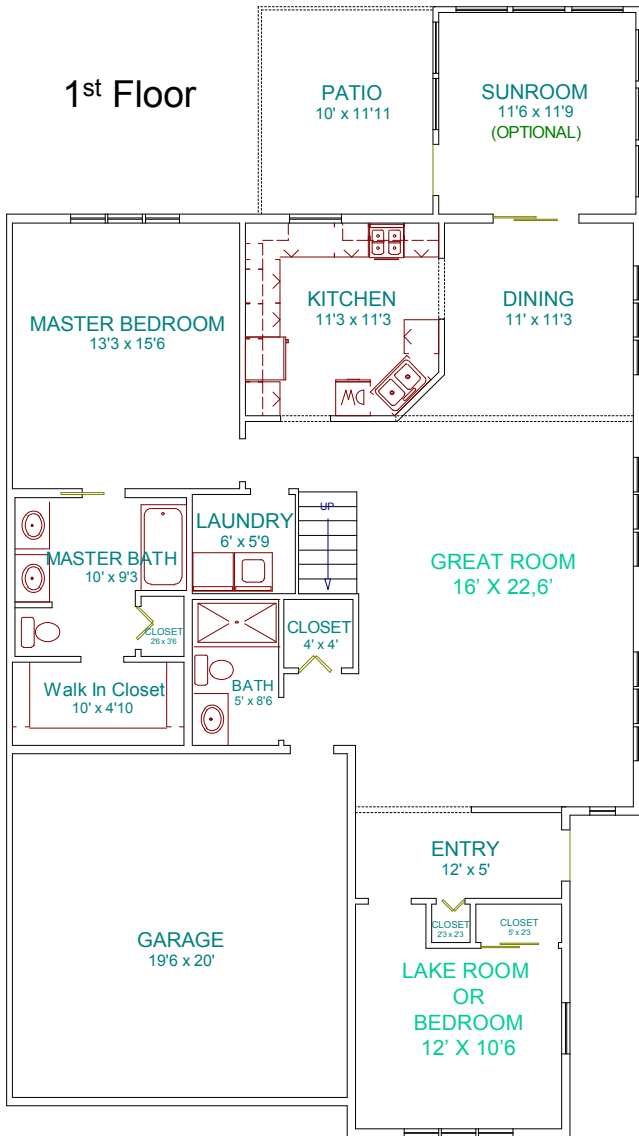
1,604 sq. ft. with Sun Room Option

The Oakview II

(2-Story End Unit)



The Anchorage
At Bass Lake

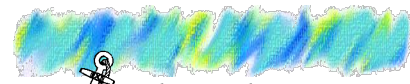


2,108 sq. ft

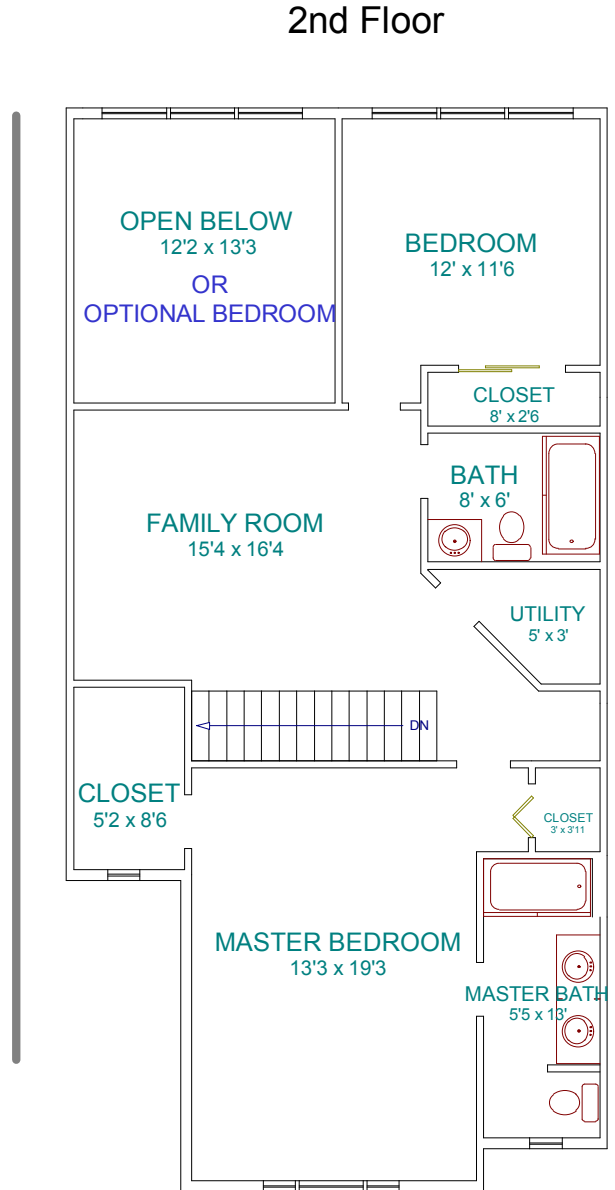
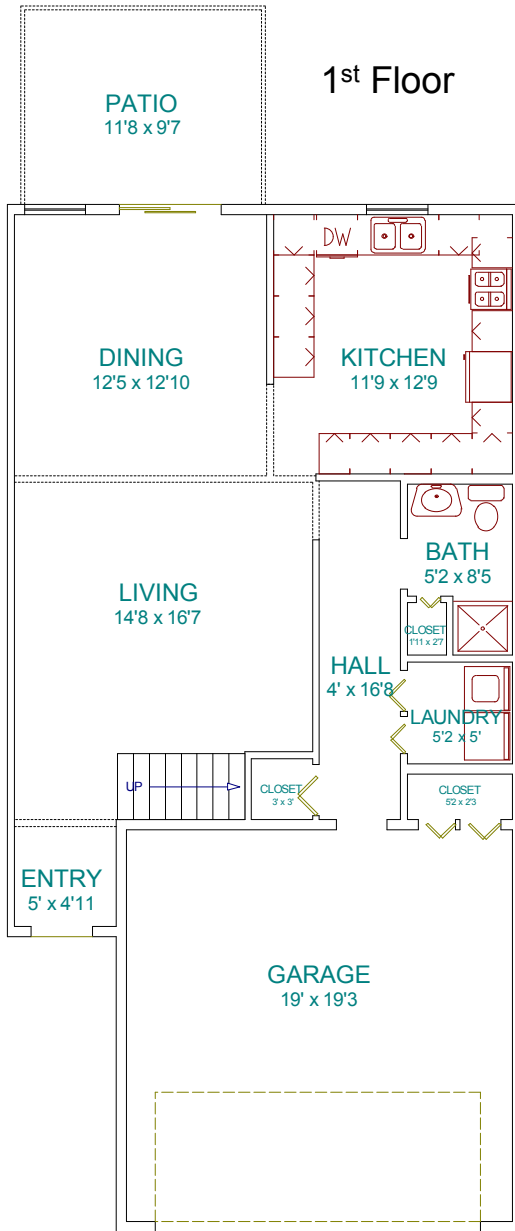
2,490 sq. ft. with Sun Room & Media Room Options

The Maplecrest

(2-Story Interior Unit)



The Anchorage
At Bass Lake

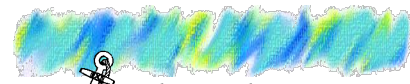


1,803 sq. ft.

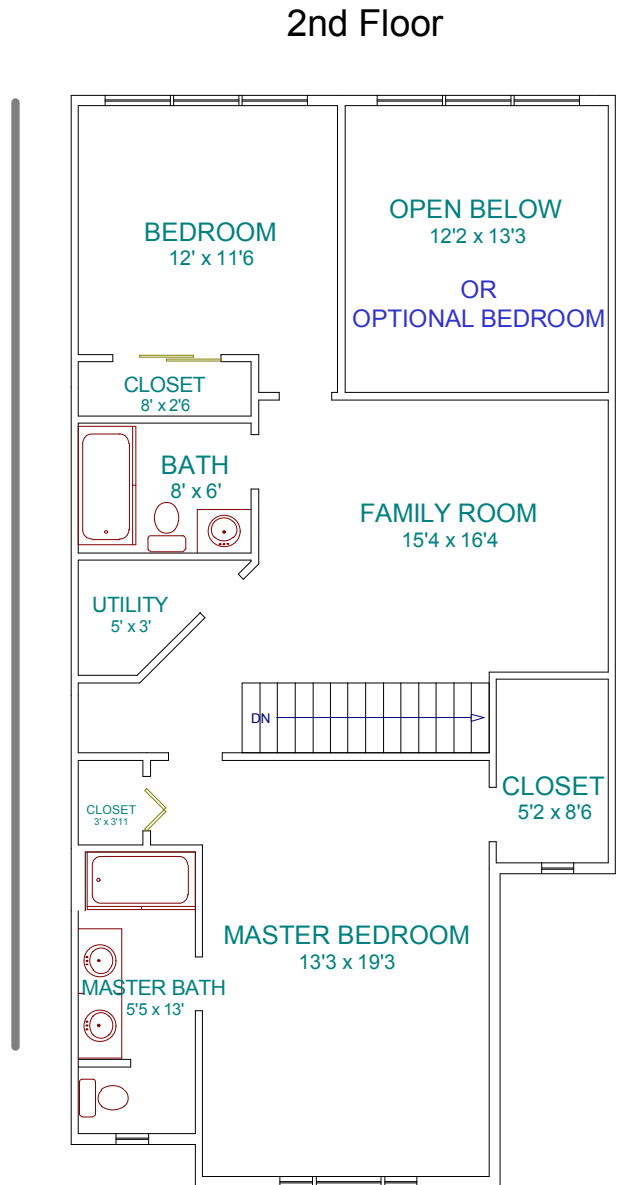
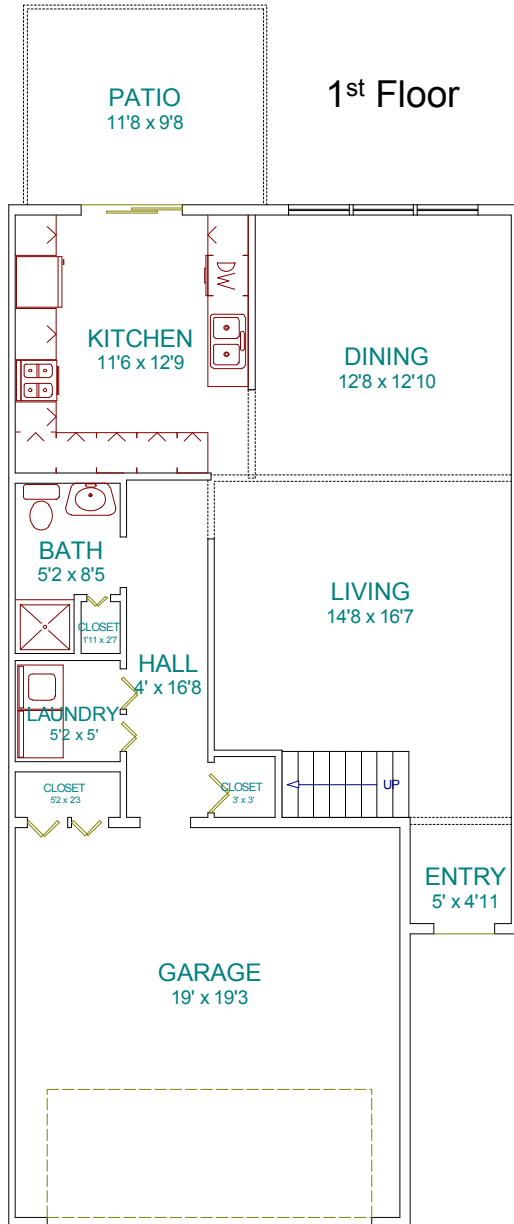
1,980 sq. ft. with Optional Bedroom

The Hawthorne

(2-Story Interior Unit)



The Anchorage
At Bass Lake



1,803 sq. ft.

1,980 sq. ft. with Optional Bedroom